

353 600 €

**Immeuble occupational**

Surface : 221 m<sup>2</sup>

Exposure : Est ouest

Cover : slate

**Benefits :**

Immeuble indépendant



Immeuble ref. 389P12V Dinan

HENANBIHEN- Beautiful investment building comprising 6 rented accommodations:

On the ground floor: 2 studios of 47m<sup>2</sup> each, rented for €450/month, on the 1st floor: 3 studios including 1 of 20m<sup>2</sup> and 1 of 25m<sup>2</sup> rented for €360 and €390 and 1 studio of 16m<sup>2</sup> to renovate (not rented), on the 2nd floor : a 66m<sup>2</sup> T3 rented for €500. Individual heating, mains drainage.

Virgin DPE and GHG

Ref:389V324A

Information on the risks to which this property is exposed is available on the website [www.georiques.gouv.fr](http://www.georiques.gouv.fr)

Find all our real estate advertisements on the website [www.christellemesnage.com](http://www.christellemesnage.com).

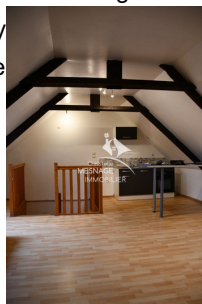
A dynamic and professional agency that responds to all your requests for the sale of houses, apartments, land in the DINAN region or for any rentals.

The Christelle Mesnage Immobilier agency welcomes you from Monday afternoon

to Saturday for real estate projects in the

Contact the agency on 02.96.88.00.01

Document non contractuel  
27/07/2024 - Prix T.T.C



Christelle Mesnage Immobilier - 14 Rue de la Ferronnerie - 22100 Dinan

Tel : 02.96.88.00.01 ou portable : 06.80.01.43.12.

[contact@christellemesnage.com](mailto:contact@christellemesnage.com) - [www.christellemesnage.com](http://www.christellemesnage.com) - Document non contractuel