

**358 800 €**

**Contemporary house for sale**

**7 rooms**

**Surface : 160 m<sup>2</sup>**

**Surface of the living space : 48 m<sup>2</sup>**

**Surface of the land : 263 m<sup>2</sup>**

**Year of construction : 2006**

**Exposure : est ouest**

**Hot water : Electrique**

**Indoor condition : good**

**Outdoor condition : good**

**Benefits :**

electric shutters, Bedroom on ground floor, double glazing, house architect and ..., suite, calm

5 bedroom

1 terrace

1 bathroom

1 shower

2 WC

1 garage

**Energy class (old measure) : D**

**Climate class : B**

Document non contractuel

27/07/2024 - Prix T.T.C



### Contemporary house ref. 389V734M Dinan

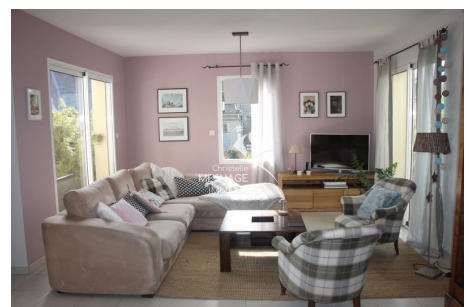
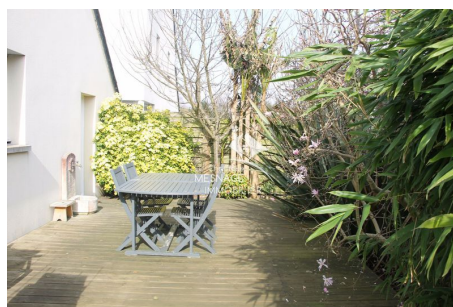
Dinan city center, architect-designed house with an entrance hall, a kitchen open to the living room with access to the terrace, 5 bedrooms including 1 suite with bathroom on the ground floor and 1 with dressing room upstairs, a bathroom equipped, 1 dressing room, utility room, garage with laundry part. all on a 263m<sup>2</sup> of garden. bright, not overlooked, quiet.

ecd of energy consumption 173.51 kWh / m<sup>2</sup> per year. ref.389v734m

find all our ads on the website [www.christellemesnage.com](http://www.christellemesnage.com) (houses, flats and land) for sale on Dinan and common léhon nearby quévert, lanvally, taden, Trelivan, plouer on rance

**Fees and charges :**

358 800 € agency fees 3,85% à the responsibility of the purchaser is included



Christelle Mesnage Immobilier - 14 Rue de la Ferronnerie - 22100 Dinan

Tel : 02.96.88.00.01 ou portable : 06.80.01.43.12.

[contact@christellemesnage.com](mailto:contact@christellemesnage.com) - [www.christellemesnage.com](http://www.christellemesnage.com) - Document non contractuel